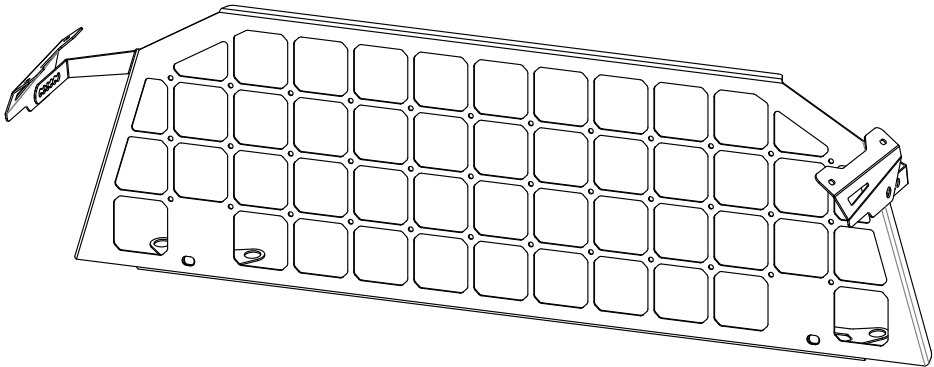





FITTING INSTRUCTIONS FOR

Light Cargo Barrier

SKU	COMPATIBILITY
KS0587	Toyota LandCruiser LC300



Included contents			
QTY	COMPONENT	QTY	COMPONENT
1	Light Cargo Barrier	4	M6 Aluminium Nut Block
2	Head Rest Bracket	2	M6 X 18 X 1.6 DIN Flat Washer
2	Handle Bracket (LHS & RHS)	2	M10 x 20 Button Head Socket Screw
2	Barrier Bracket (LHS & RHS)	2	M10 x 30 x 2.5 DIN Flat Washer
4	Black TPU Nut Retainer	6	M6 x 16 Flanged Hex Bolt G8.8
1	M6 x 50 Hex Bolt (Installation Tool)	2	M10 x 20 Black Plastic Knob

 **Time**

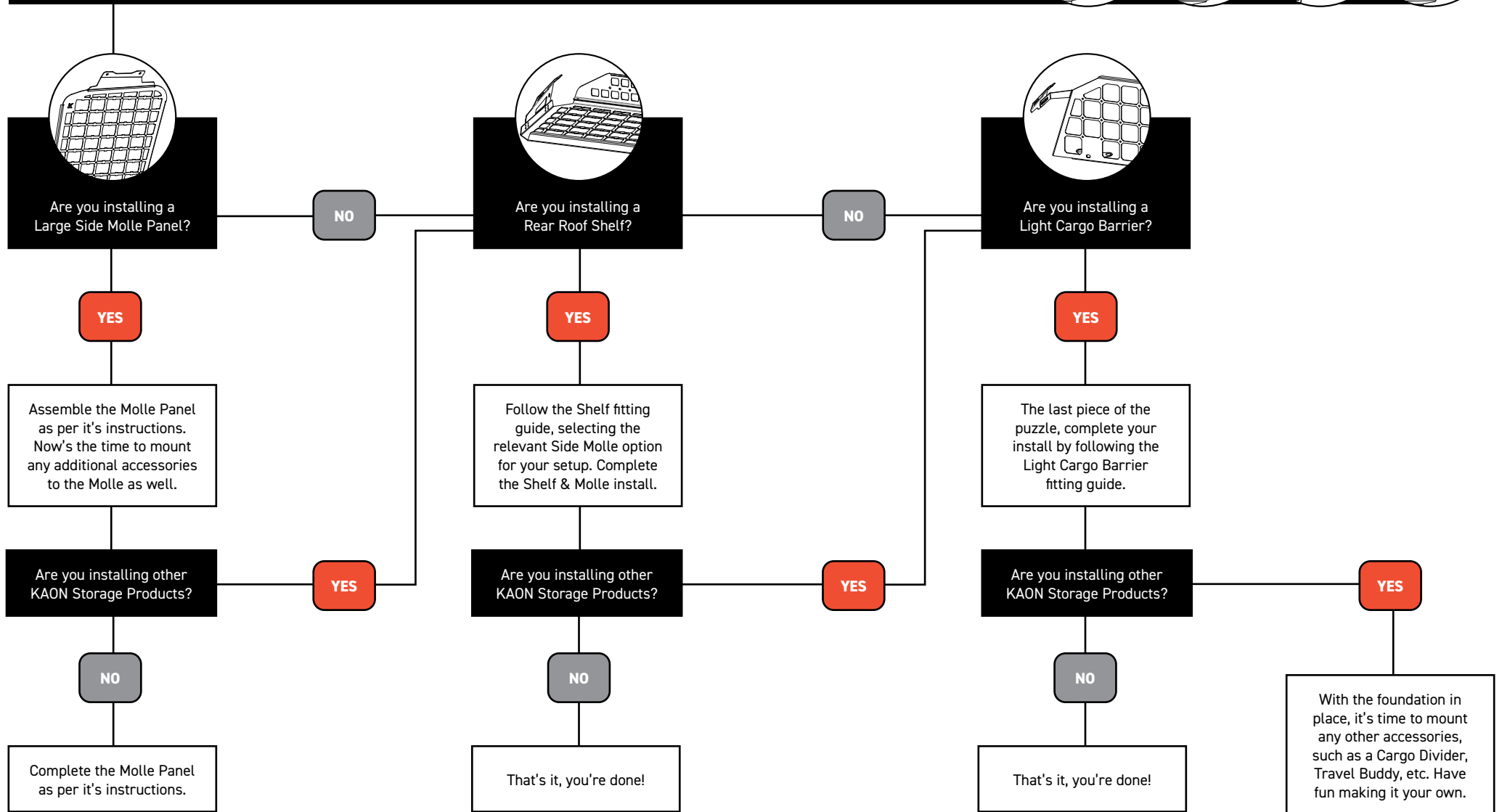
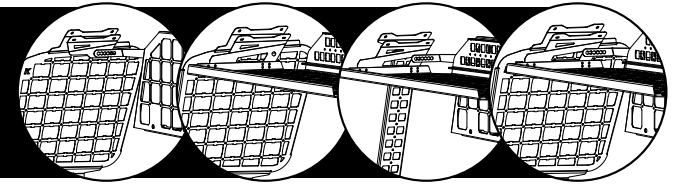
30 minutes / Half a beer

Scan the **QR code** to watch the video installation guide,
or for further information contact KAON on **07 3180 1470** or **info@kaon.com.au**



It all works together.

All our storage products work together, but there is a certain order to installing.
Let's work out the best order for your setup, shall we?

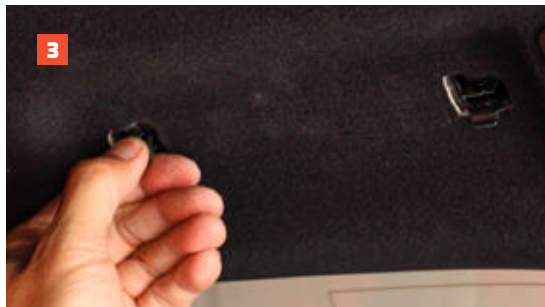


With your setup order sorted, let's get to the good part: installing. →

Let's get to work.

Preparing the Vehicle

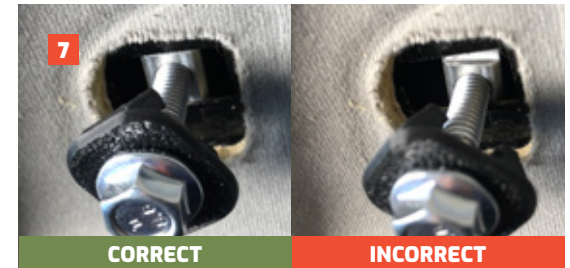
1. Pry off the plastic cover on the rear grab handle mounts.
2. Use a screwdriver to squeeze on the metal clips to free the grab handle.
3. Squeeze the metal clips to free them from the opening. Set aside.
4. Ensure there is 2mm of clearance around the rectangular clip opening. If required, push the lining away, or slightly trimming the roof lining.



M6 Roof Nut Installation

IMPORTANT: Please read and understand the steps required to install and retain the M6 nut blocks in the roof. Refer to our Fitting Guide video (find a QR code on the cover) for more details.

5. The supplied M6 x 40 hex bolt is used to install the nut block and retainer in the roof cavity.
6. Place the retainer and nut block on the hex bolt as shown in the picture. The retainer will clip over the nut block to hold it in the roof cavity.
7. Insert the nut block into the rectangular opening in the roof. Rotate the block 90 degrees so that the raised spigot on the nut block locates in the rectangular opening.
8. While pulling back on the bolt, insert one leg of the retainer and push to clip in place.
9. Push the other leg up into the cavity and ensure that retainer is securely held in the roof and that the aluminum nut is held in place properly. Pull on the hex bolt to confirm that the aluminum nut is position properly and held securely.
10. Unwind and remove the bolt.
11. Repeat on the other side.



Installing the Brackets

To install the **Light Cargo Barrier**:

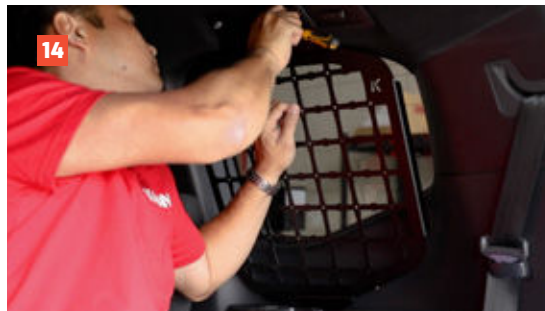
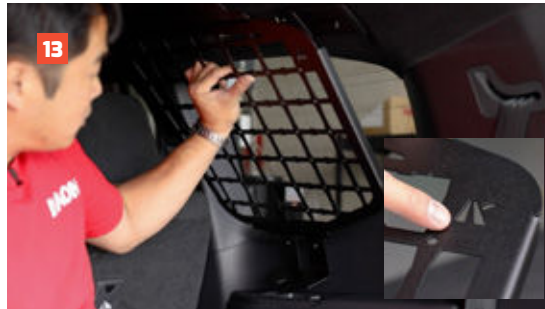
12. Install the handle brackets to the captive nuts we installed earlier. Ensuring the nutsert is towards the front of the vehicle, tighten to secure.

To install **with the Standalone Shelf**

13. Follow the instructions provided with the Standalone Shelf, then skip to step 18 below.

To install **with the Molle Panels**:

14. Ensure you have the correct molle panel for each side, with the 'K' positioned at the back of the vehicle. Place the feet of the Molle Panel into the rear cupholders.
15. Sandwich the barrier handle brackets over the Molle Panel top mounts. Ensuring the handle bracket nutsert is towards the front of the vehicle.
16. Apply pressure to the Molle Panel and carefully align the M6 bolts with the holes in the roof. Secure the bolts, making sure not to push the captive nuts out of the retainers.
17. Make any necessary adjustments to the panel. While applying pressure to the panel, tighten all bolts.



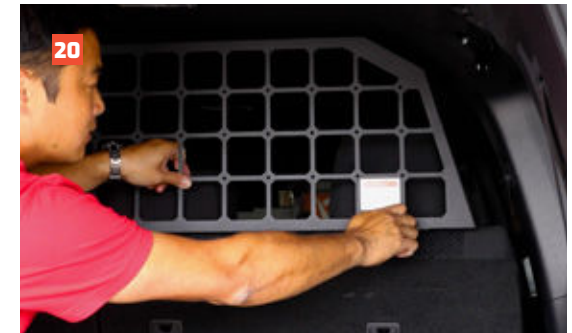
Assembling the Barrier

18. Attach the barrier brackets to the barrier using the supplied M6 bolts.
19. Ensure that the barrier brackets are attached in the correct orientation. The notched barrier bracket should be on the left hand side.



Installing the Barrier

20. Remove the head rests and slide on the head rest brackets. Re-install the head rests with brackets in place.
21. Position the main barrier against the head rests. The flanged edge on the barrier should be directed forwards, and the warning stickers should be visible from the rear of the vehicle.
22. Loosely secure it to the head rest brackets using the M10 domed head bolts and M10 washer.
23. Attach the barrier bracket to the handle bracket nutsert using the M10 knob. You can adjust the position of the barrier by selecting the most suitable hole in the barrier bracket.
24. Once the barrier is in the desired position, tighten all bolts and knobs securely. That's it, you're done! The barrier can be quickly removed by removing the plastic knobs and lifting out the head rests.



NOTICE

This barrier has not been tested to Australian Standards, and is intended as a pet barrier or for use when off-road. We cannot confirm compatible fitment of the this barrier with child restraints, due to the number of possible variations. Whilst it may work with your configuration, we recommend the use of a seat belt protector where any contact occurs between any seat belt or restraint and the barrier.

Bolt Torque

DIAMETER (mm)	5mm	6mm	8mm	10mm	12mm
NEWTON-METRES (Nm)	5 Nm	9 Nm	22 Nm	44 Nm	77 Nm



Local Knowledge & Assistance

We know half the fun of building your dream 4x4 is getting your hands dirty. But we also know that sometimes, things don't go to plan. If in the pursuit to build the ultimate setup you find yourself off-track, we're here to help you get unstuck.

For further information call 07 3180 1470 or email info@kaon.com.au

Disclaimer: The products sold by KAON should not be modified, and are for use only on the vehicles specifically stated. KAON will not be liable for any damages arising out of the use or misuse of it's products. It is the customers responsibility to ensure the products are safely and properly used and installed. KAON consistently seeks to improve it's products and reserves the right to make changes to any product.