

7929 Lincoln Ave. Riverside, CA 92504
Phone: 951.689.ICON | Fax: 951.689.1016

PART #	DESCRIPTION
82720	97-UP NISSAN PATROL Y61 2" REAR COIL KIT

COMPONENTS INCLUDED	
(2) 188506 97-UP PATROL Y61 2" REAR COIL SPRING	
HARDWARE INCLUDED	
N/A	N/A
TOOLS REQUIRED	
FLOOR JACK JACK STANDS PLIERS TORQUE WRENCH	10MM SOCKET / WRENCH 14MM SOCKET / WRENCH 19MM SOCKET / WRENCH 22MM SOCKET / WRENCH
TECH NOTES	
N/A	



WARNING!
** READ ALL INSTRUCTIONS THOROUGHLY FROM START TO FINISH BEFORE BEGINNING INSTALLATION! IF THESE INSTRUCTIONS ARE NOT PROPERLY FOLLOWED SEVERE FRAME, SUSPENSION AND TIRE DAMAGE MAY RESULT TO THE VEHICLE!
** ICON VEHICLE DYNAMICS RECOMMENDS THAT YOU EXERCISE EXTREME CAUTION WHEN WORKING UNDER A VEHICLE THAT IS SUPPORTED WITH JACK STANDS.
** ICON VEHICLE DYNAMICS RECOMMENDS ALL INSTALLATION TO BE PERFORMED BY A PROFESSIONAL SHOP/SERVICE TECHNICIAN. PRODUCT FAILURE CAUSED BY IMPROPER INSTALLATION WILL NOT BE COVERED UNDER ICON'S WARRANTY POLICY.

INSTALLATION

- Using a properly rated jack, raise the rear of the vehicle and support the frame rails with jack stands. Ensure the jack stands are secure and set properly before lowering the jack. NEVER WORK UNDER AN UNSUPPORTED VEHICLE. Remove the rear wheels.
- Disconnect the rear sway bar links from the frame using a 14mm. [FIGURE 1]

FIG.1



3. Disconnect the breather hose from the top of the differential using pliers. If equipped with lockers, disconnect the vacuum hose from the differential locker actuator. Disconnect the ABS line from the upper control arm using a 10mm. [FIGURE 2 & 3]

FIG.2



FIG.3

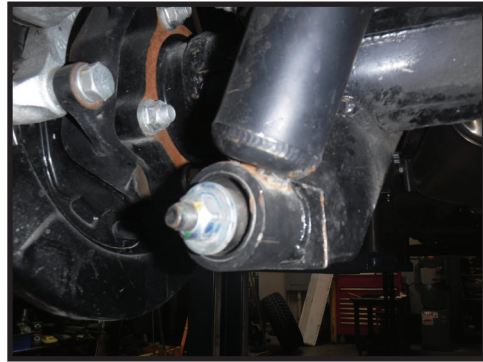


4. Disconnect the rear track bar from the frame using a 22mm. Support the rear differential and disconnect the rear shocks from the differential using a 19mm. [FIGURE 4 & 5]

FIG.4



FIG.5



5. Carefully lower the differential enough to remove the rear coils.

6. Install the new coils being sure to seat them properly on the coils seats.

7. If installing ICON shocks absorbers (87843P or 87843CP) reference shock installation instructions. Raise the differential enough to connect the shocks. Torque to factory spec using a 19mm. Connect the rear track bar from the frame using a 22mm. [Torque to factory spec] [FIGURE 6 & 7]

FIG.6

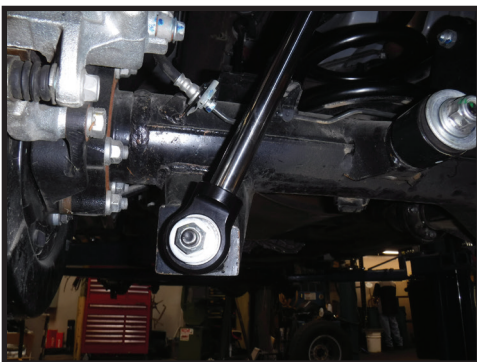


FIG.7

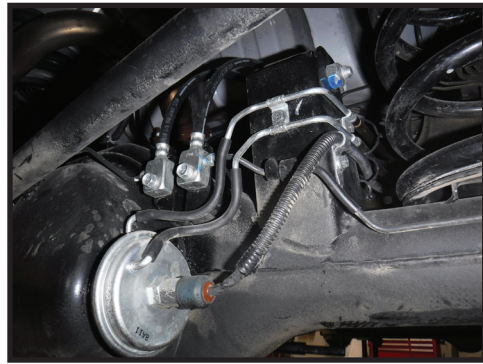


8. Connect the breather hose to the top of the differential using pliers. If equipped with lockers, connect the vacuum hose to the differential locker actuator. Connect the ABS line to the upper control arm using a 10mm. Torque to factory spec. [FIGURE 8 & 9]

FIG.8



FIG.9



9. Connect the rear sway bar links to the frame using a 14mm. [FIGURE 10]

FIG.10



VERIFY ALL FASTENERS ARE PROPERLY TORQUED BEFORE DRIVING VEHICLE.

RETORQUE ALL NUTS, BOLTS AND LUGS AFTER 100 MILES AND PERIODICALLY THEREAFTER.

ICON VEHICLE DYNAMICS LIMITED LIFETIME WARRANTY

ICON Vehicle Dynamics warrants to the original retail purchaser who owns the vehicle on which the product was originally installed. ICON Vehicle Dynamics does not warrant the product for finish, alterations, modifications and/or installation contrary to ICON Vehicle Dynamics instructions. ICON Vehicle Dynamics products are not designed, nor are they intended to be installed on vehicles used in race applications, for racing purposes or for similar activities. (A "race" is defined as any contest between two or more vehicles, or a contest of one or more vehicles against the clock, whether or not such contest is for a prize). This warranty does not include coverage for police or taxi vehicles, race vehicles, or vehicles used for government or commercial purposes. Also excluded from this warranty are sales outside of the United States of America and Canada.

ICON Vehicle Dynamics' obligation under this warranty is limited to the repair or replacement, at ICON Vehicle Dynamics' discretion, of the defective product. Any and all costs of removal, installation or re-installation, freight charges and incidental or consequential damages are expressly excluded from this warranty. Items that are subject to wear are not considered defective when worn and are not covered.

ICON Vehicle Dynamics components must be installed as a complete kit as shown in our current application guide. Any substitutions or exemptions of required components will immediately void the warranty. Some finish damage may happen to parts during shipping and is not covered under warranty.

This warranty is expressly in lieu of all other warranties expressed or implied. This warranty shall not apply to any product that has been improperly installed, modified or customized subject to accident, negligence, abuse or misuse.